

# REMOTE MANAGER

software

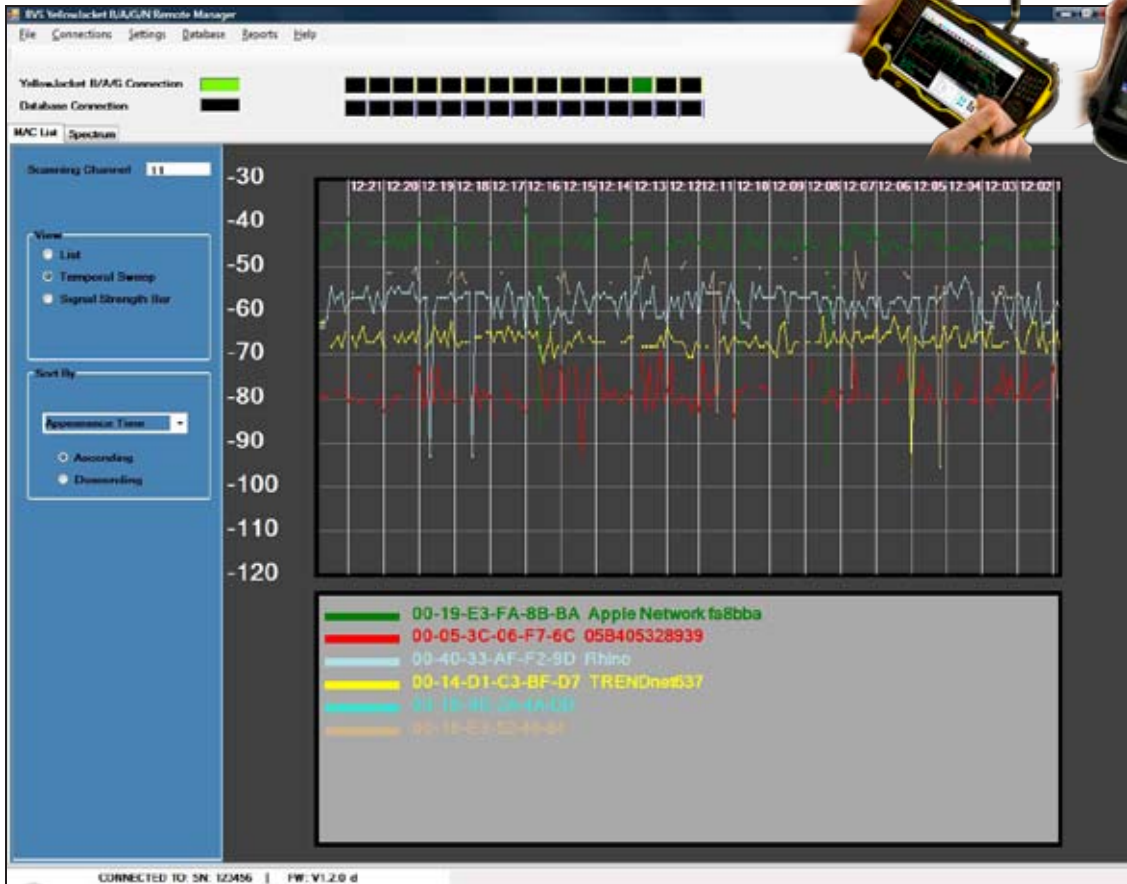
software for your

## BEETLE-B/A/N/G

## YELLOWJACKET®-B/A/N/G

See EVERYTHING your Wi-Fi receiver sees...

### 802.11B/A/N/G REMOTE MONITORING SOFTWARE



MAC  
SSID

Multipath

Power Triggers\*

Waveform Traces\*

Absolute Channel

Spectrum Analysis\*

Peak Hold/Search\*

Signal-to-Noise Ratios

\*Yellowjacket support only

...from ANYWHERE

## FEATURES

- Controls Yellowjacket B/A/N/G or Beetle-BANG remotely from any RJ-45 connection
- Monitor your network from anywhere - home and office.
- Data collected in real-time and stored in a relational database\*
- Create comprehensive reports from your measured network data
- Export reports to PDF® and MS Excel® formats
- Collect spectrum data from the RF environment
- Collect packet data parameters such as MAC, SSID, Channel
- Data reports over various time periods for temporal overview of your network
- Software includes ethernet receiver dongle and cable

**Remote Manager™** software is a data monitoring & reporting application that connects to any **Yellowjacket® B/A/N/G** or **Beetle™-BANG** through a standard 10/100 ethernet connection. With **Remote Manager™**, users can control what wireless data is to be collected via the **Yellowjacket®** or **Beetle™** Wi-Fi receivers and store that data in a relational database\* for future retrieval and analysis. **Remote Manager™** allows users to scan the RF spectrum (**Yellowjacket® B/A/N/G only**) for packets and interference over time creating a network footprint of usage to find out who's in your network airspace with or without authorization. **Remote Manager™** even creates comprehensive PDF or MS Excel reports for an IT manager's overview. All of this can be accomplished from anywhere in the world; all you need is access to an ethernet connection to place your **Yellowjacket®** or **Beetle™** Wi-Fi receiver.

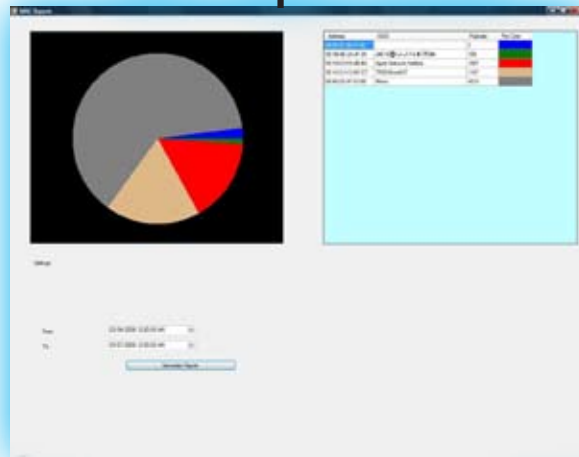
Call us today for more information:  
TOLL FREE 1-888-737-4287 / (outside U.S. & Canada) +1 732-548-3737  
www.bvsystems.com  
sales@bvsystems.com

\* Data collected in real-time stored in a relational database powered by SQL Server Express.

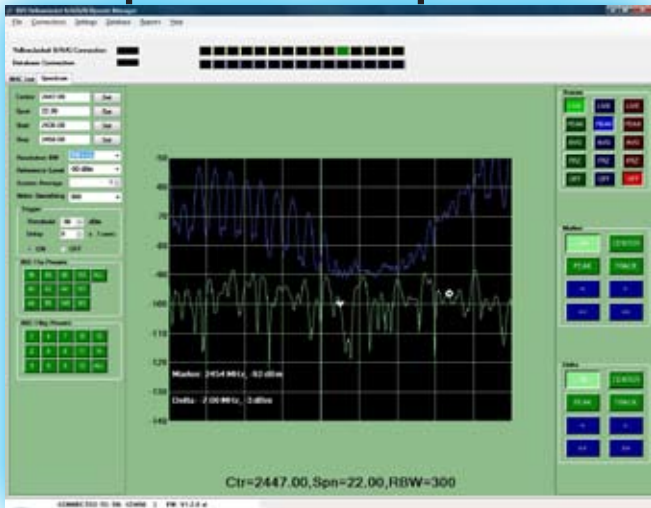
**BERKELEY  
VARITRONICS  
SYSTEMS**  
Clarifying RF  
Providing wireless solutions for over 35 years.

# REMOTE MANAGER MEASUREMENT SCREENS

## MAC Report Screen



## Spectrum Sweep Screen



## MAC List Monitoring



## MAC List Screen

The screenshot shows a table listing MAC addresses and their associated information. The table has columns for MAC, Channel, Signal Strength, and other details.

MAC	Channel	Signal Strength	Other
00:14:35:00:00:00	1	-45	00:14:35:00:00:00
00:14:35:00:00:01	1	-65	00:14:35:00:00:01
00:14:35:00:00:02	1	-65	00:14:35:00:00:02
00:14:35:00:00:03	1	-75	00:14:35:00:00:03
00:14:35:00:00:04	1	-85	00:14:35:00:00:04
00:14:35:00:00:05	1	-105	00:14:35:00:00:05

## Temporal Sweep Screen



powered by:



Providing wireless solutions for over 35 years.