

SWARM™



802.11B/A/N/G WI-FI INDOOR/OUTDOOR SITE SURVEYS

1 Create Survey Maps:

SWARM PROJECTOR (PC)

- Import any bitmap for use in your Yellowjacket B/A/N/G
- Create geo-coded site files for analysis

2 Constant Realtime Wi-Fi Surveys:

SWARM COLLECTOR (IPAQ)

- Scan all 802.11 channels on BOTH 2.4 GHz and 5 GHz
- JPEG snapshots of any survey screen
- Collect survey data automatically via GPS
- Collect data by manually tapping touch-screen

3 Coverage Reliability Analysis:

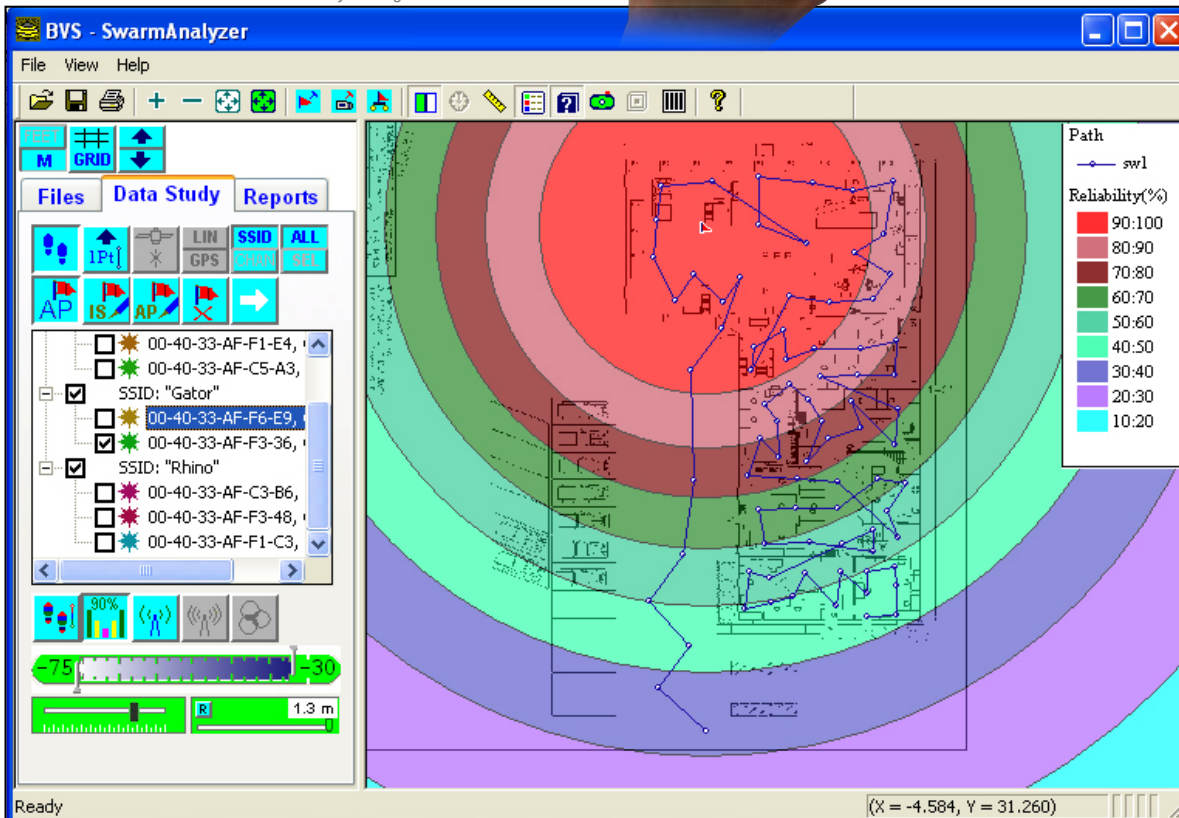
SWARM ANALYZER (PC)

- Plot surveys in multiple graphical and table views
- Plot coverage by APs or AP channels
- Locate unknown APs' positions
- Print and export plots into bmp files for spreadsheets
- Create KML file for plotting coverage over Google Earth™

Swarm™ combines the power of realtime Yellowjacket® 802.11b/a/n/g Wi-Fi measurements with GPS geo-coding accuracy. First, create your survey bitmaps with both Linear and GPS PROJECTOR software. Next, simply walk or drive to any spot with GPS reception while Swarm™ COLLECTOR scans all 802.11b/a/n/g channels and correlates them to your exact location automatically via GPS or manually by tapping on the touch-screen. GPS measurements provide both LAT and LON as well as time stamping for a complete Wi-Fi survey path anywhere in the world. Swarm™ COLLECTOR allows JPEG screen snapshots to be taken at particular points of interest throughout the survey. Finally, survey data such as RSSI, MAC and SSID may be exported into Swarm's ANALYZER for further mapping coverage studies in multiple graphical and tabular layouts. In areas with little or no GPS reception, Swarm™ ANALYZER only needs a few reference points to fill in the locations for the rest making it effective for quick outdoor studies. Surveys may be exported further into KML files for plotting in applications such as Google Earth™.



Use Yellowjacket 802.11b/a/n/g Wi-Fi receiver hardware for handheld surveys using a touch-screen interface.



FEATURES:

- Create survey bitmaps with BVS' Linear or GPS Projector software
- Collect data by using GPS position for outdoor surveys
- Collect data by manually tapping locations for indoor studies
- Choose any 802.11b/a/n/g Wi-Fi channels to scan
- JPEG screen snapshots may be taken throughout the survey
- Survey data such as RSSI, MAC and SSID is exported into Swarm Analyzer for further mapping coverage studies in multiple graphical and spreadsheet layouts
- Surveys may be exported further into KML files for plotting in applications such as GoogleEarth™

Call us today for more information:
TOLL FREE 1-888-737-4287
Tel: +1 732-548-3737 Fax: (732) 548-3404
www.bvsystems.com email: sales@bvsystems.com

Google Earth is a registered © trademarks of the Google Corporation.



SWARM SITE SURVEY REPORT

Site Survey Study Report

SSD File Information

Index	File Directory & Name	Created Time
1	C:\Users\Buldar\Documents\Example\SSD\Index.ssd	Fri Mar 27 16:47:54 2008

Access Point Information

Index	SSID	MAC	Channel	Y Axis(FX Axis)	X Axis(FY Axis)	No. Points	No. Points
1	Galator	00-40-13-AF-F6-E9	4	207.158	171.113	33	35
2	Galator	00-40-13-AF-F3-35	8	179.996	145.439	36	75

AP Antenna Information and Notes

AP's SSID	AP's MAC	Trans. Power(dBm)	Antenna Gain	Height(Ft)	Direction(Deg)	Notes
Galator	00-40-13-AF-F6-E9	10	3 dBi	19	0mms	This one is used by HR department
Galator	00-40-13-AF-F3-35	20	2.5 dBi	19	0mms	This one is used by IT department

Marked Access Point's Information

Index	SSID	MAC	Channel	Y Axis(FX Axis)	X Axis(FY Axis)
1	Galator	00-00-2A-CD-3E-68	11	3.072	235.939

Marked AP's Antenna Information and Notes

AP's Name	Trans. Power(dBm)	Antenna Gain	Height(Ft)	Direction(Deg)	Notes
AP4	30	3 dBi	20	0mms	This AP is used to cover the building

Interference Source's Information

Index	Name	Frequency	Bandwidth	Y Axis(FX Axis)	X Axis(FY Axis)	Notes
1	Wireless Scan	3400 MHz	80.000	172.148	18	is used in lunch room

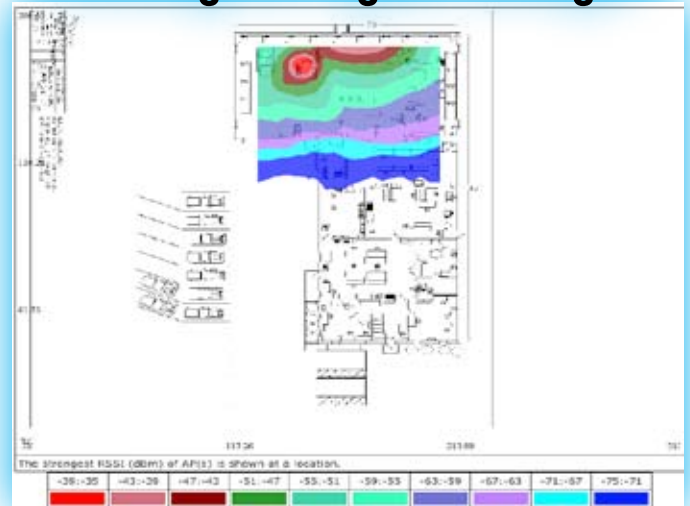
Survey Path



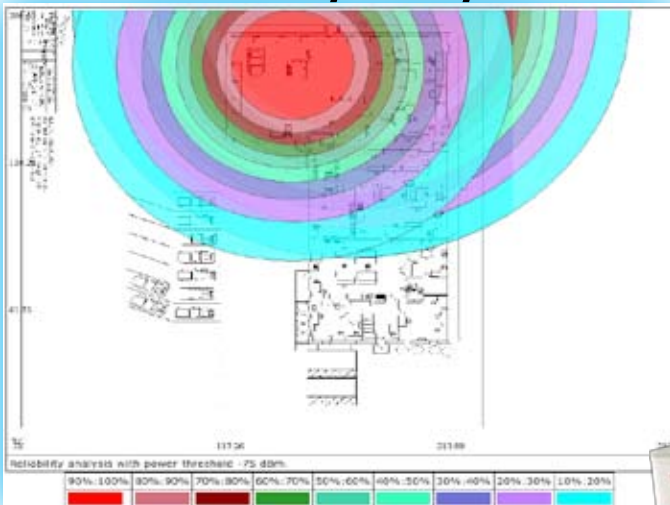
Coverage of Access Points



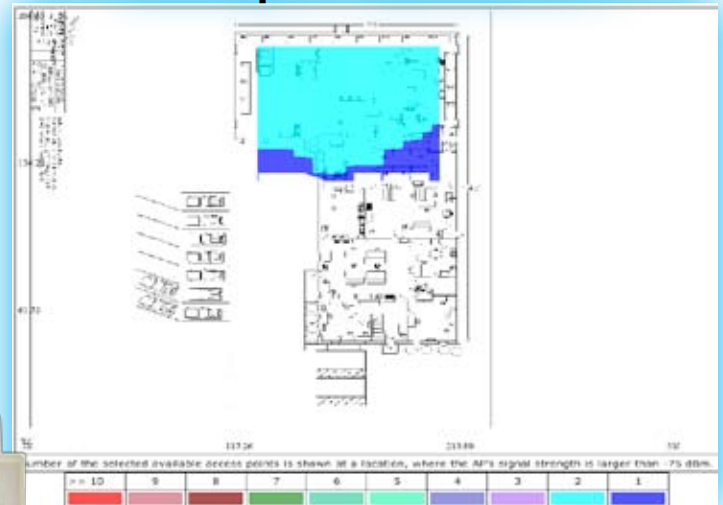
Coverage of Signal Strength



Reliability Analysis



Overlap of Selected APs



powered by:



Providing wireless solutions for over 35 years.